

Master of Public Health – Master of Global Development





Master of Public Health- Master of Global Development

- ✔ Be empowered to lead change by critically reviewing regulatory requirements, ethical principles, and cultural frameworks. Address global poverty, inequality, climate change and development issues with an emphasis on tropical, remote, and Indigenous contexts.
- ✔ Benefit from a multi-faceted approach to learning. Undertake an individual research project, or take advantage of a domestic or international internship that will expand your professional network.

COURSE DETAILS:

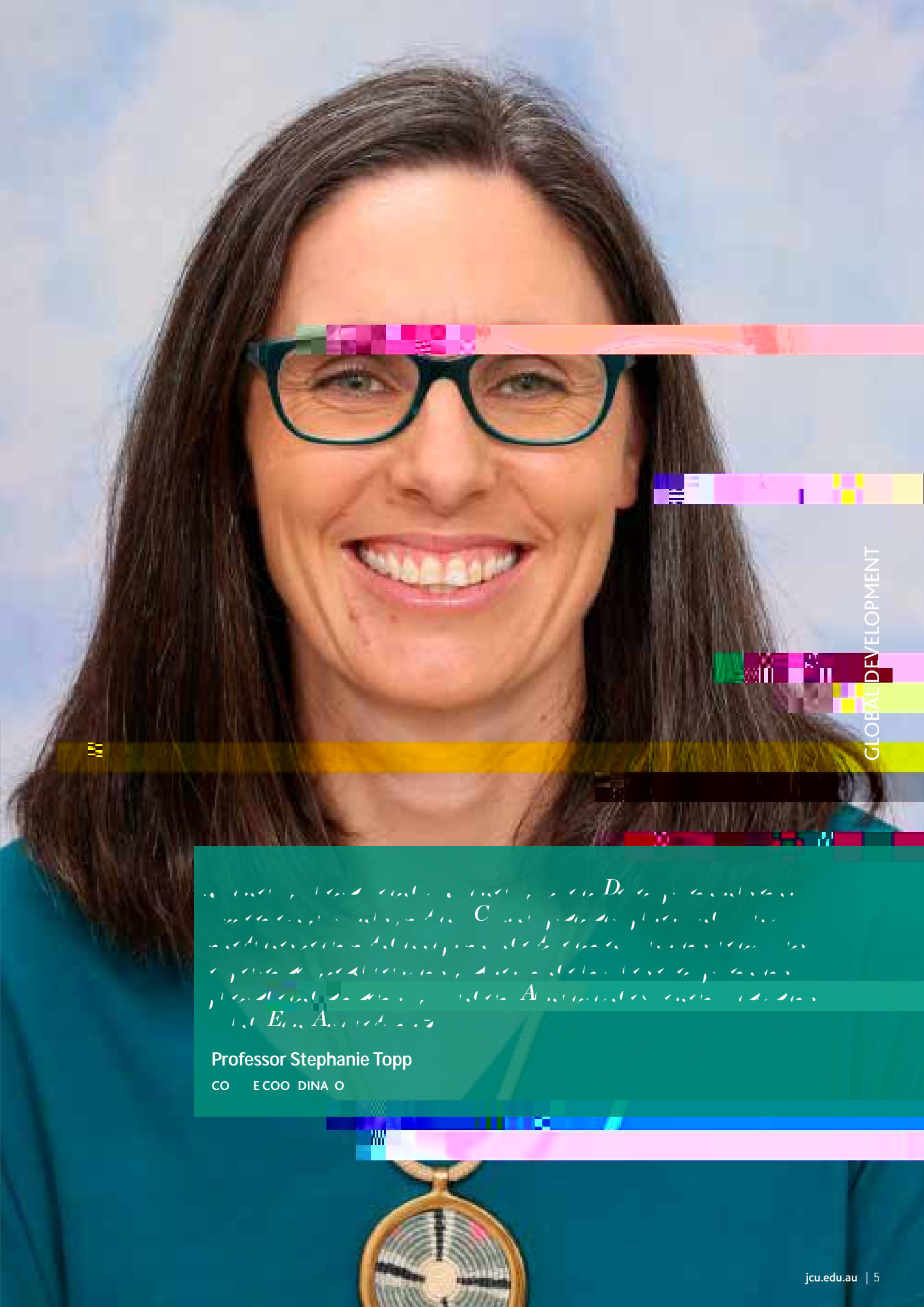
Location:	Online
Start Dates:	February, July
Duration:	2 years full-time, part-time available
Prerequisites:	AQF level 7 bachelor degree in a relevant health discipline; or equivalent

Please visit the [handbook](#) for a detailed outline of the course structure. Note: Information is for domestic students only.

Be equipped with the interdisciplinary skills and expertise to address pressing global challenges in public health and global development. Gain an in-depth understanding of the urgent issues facing vulnerable communities through JCU's unique position as a university for the Tropics that has worldwide impact.

Be prepared to develop strategies for addressing both current and future challenges through the Master of Public Health — Master of Global Development degree, which is highly attuned to the development challenges of the next decade. This degree is the first joint Master's program in Australia to respond to the development needs resulting from the COVID-19 pandemic. You will gain key conceptual and practical skills to understand and respond to shifting landscapes of public health and human development.

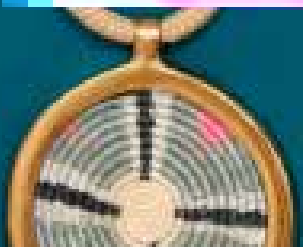
Benefit from studying at a university ranked in the top 100 universities in the world for the United Nation's Sustainable Development Goals (SDGs). Develop the knowledge and experience which will allow you to work in priority areas of poverty alleviation, disease prevention, health promotion, gender equality, social justice, climate responsive systems, and sustainable resou74 (u)-3.4 h03 Tw.8 (a)-0.9 (1s)4. -1.2 Td(g)pmevanvoestor th4ein kn,



GLOBAL DEVELOPMENT

...a world, and a world is a world, and a world is a world. *De la grande civilisation*
...a world, and a world is a world, and a world is a world. *C'est la grande civilisation*
...a world, and a world is a world, and a world is a world. *La grande civilisation*
...a world, and a world is a world, and a world is a world. *La grande civilisation*
...a world, and a world is a world, and a world is a world. *La grande civilisation*
...a world, and a world is a world, and a world is a world. *La grande civilisation*

Professor Stephanie Topp
CO O D I N A O





Career Opportunities

As a graduate of the Master of Public Health — Master of Global Development, you will have strong skills in project and resource management, leadership, planning, critical evaluation and advanced research as well as extensive practical experience. As the



Postgraduate coursework applications

Apply directly to JCU, either by a form you download, complete and return, or by using the [Online Application Portal](#).

Your application must reach us before the deadline for your course.

EN _ E _ I EMEN

Postgraduate courses will usually require completion of an appropriate undergraduate degree for entry. You'll need to include certified copies of qualifications and academic records with your application. For some programs, appropriate work experience or equivalent qualifications will be considered.

The entry requirements for each course are included on the Apply now page for the course.

F _ HE INFO MA ION

To find out more, call 1800 246 446 or contact the [Student Enquiry Centre](#).

